

Pillow Block Sensor BZHB

Scope of Supply

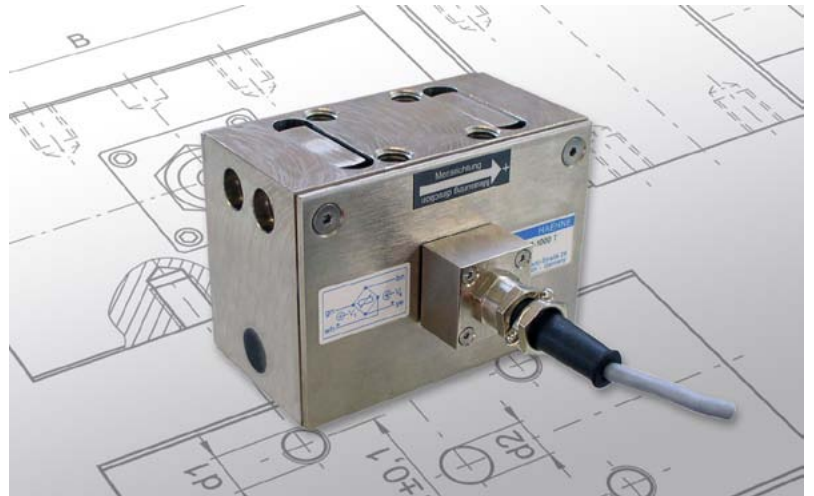
Force sensor in pillow block design with 5 m cable (PVC), with connection variant T: cable gland, straight

Variant

S: Plug connection, right-angled, MIL

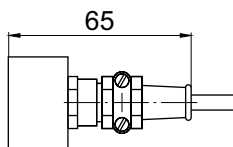
Additional Option

F: For use in explosive areas, incl. J-Box

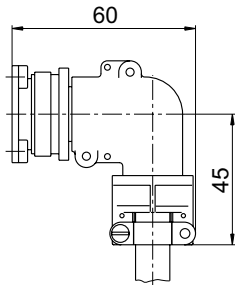


Connections

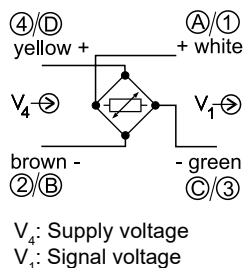
Variant T



Variant S



Wire assignment



Special Features

- Measuring range from 160 to 6300 N
- Compact design
- Easy adaptation to different types of pillow block bearing
- Overload protection up to 10-fold of nominal load
- Transverse forces permitted up to the nominal load

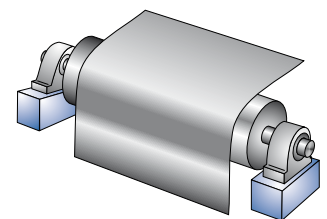
The web tension sensors of the series BZHB are of a compact pillow block design and suitable for a variety of applications. The sensors capture the tension forces parallel to the mounting plane.

Threaded holes in the base and cover plate enable an easy integration into existing machinery and equipment.

The symmetrical design is suitable to measure tension as well as compression forces. The measuring elements function according to the double beam principle.

HAEHNE offers for all its sensors a corresponding range of amplifiers to condition the measuring signal and deliver the bridge voltage supply.

For the application in the field bus system the sensor can be attached also to a Busbox.

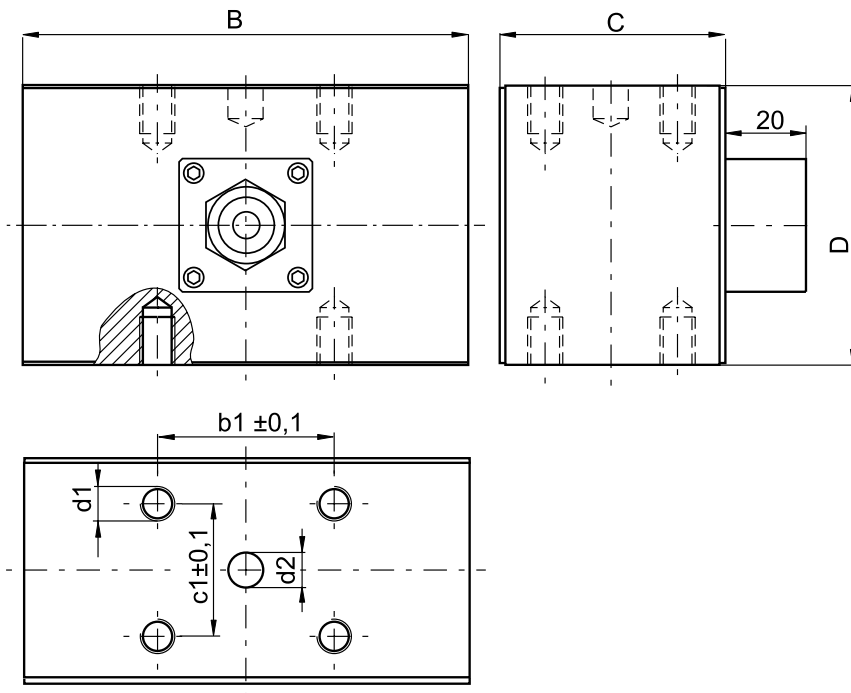
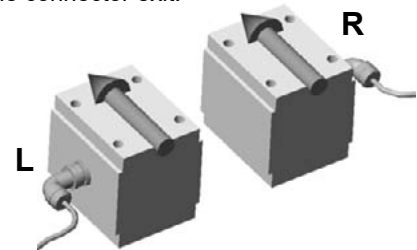


Ordering Example

BZHB01R160-T	
Type	
Size	
Design	
Nominal force	
Variants/ Options	

Technical Data	Values (%) based on nominal force
Measuring ranges	Size 01: 160 N to 1600 N
	Size 02: 630 N to 6300 N
Max. operating force	160 %
Absolute max. force	1000 %
Nominal ratings	1,5 mV / V
Combined error	0,5 %
Reproducibility	max. $\pm 0,1$ %
Non-linearity	max. $\pm 0,3$ %
Hysteresis	max. $\pm 0,3$ %
Zero drift	max. 50 ppm / °C
Nominal ambient temperature:	+ 10 ... +60° C (+50...+140° F)
	- 10 ... +70° C (+14...+158° F)
Operational temperature range	-10 ... +75° C
Nominal resistance of the strain gauge bridge	1000 Ω
Max. bridge supply voltage	10 VDC
Enclosure protection meets	Standard T: IP 52
	Option S: IP 50
	Special protection: IP 67

When ordering please specify „L“ (left) or „R“ (right) in order to determine unequivocally the measurement direction and the cable connector exit.



Tolerances as per DIN 7168m

Dimensions in mm (1 mm = 0.03937 inches)

Size	Measuring Range [N]	B	C	D	c1	b1	d1	d2
01	160, 250, 400, 630, 1000, 1600	100	50	60	30	40	M8 x 15	-
02	630, 1000, 1600, 2500, 4000, 6300	120	68	84,5	44	36	M12 x 25	12 ^{H7} x10