

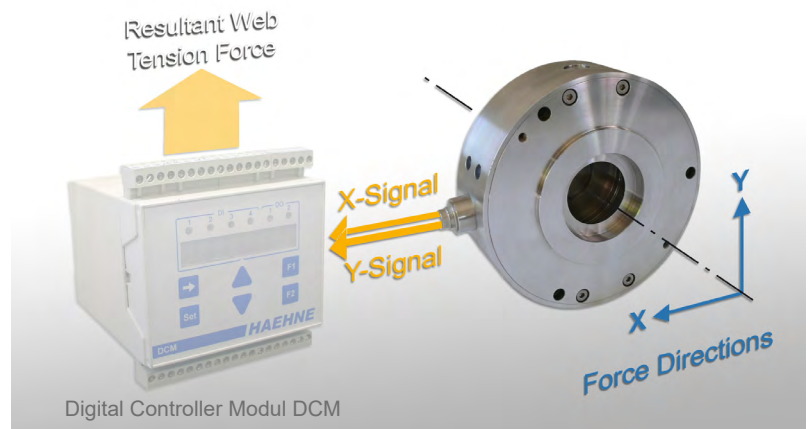
Web tension sensor XYR

Scope of Supply

Web tension sensor in flange design with 5 m cable (PVC) and connection variant S: plug connection, right-angled, MIL

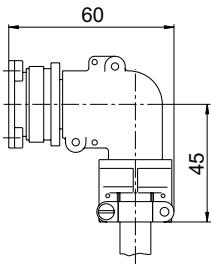
Additional Accessories

- Sealing ring
- Self-aligning ball bearing
- 2 Snap rings
- Bearing support blocks



Connection

Variant S



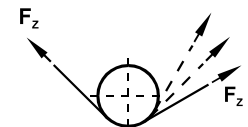
Special Features

- Simultaneously measurement in X-and Y-direction
- Flange design, mountable in any rotatable position
- Overload protection utilising mechanical stops
- Made of stainless steel

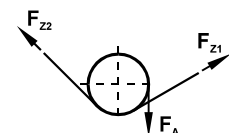
The Dual Axis Web Tension Sensor XYR measures simultaneously in the X-and Y-direction. Traditional radial force sensors measure generally only in one preferred direction. Measuring effects in other directions are typically unwanted because generally they result in measuring errors.

In combination with the HAEHNE Digital Controller Modul DCM it is possible to solve difficult Web tension measurement applications such as the following:

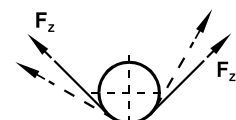
Changing wrap angle geometries on the entry or exit side. Typical applications winding stations. Thus, the XYR sensor makes it possible to dispose of additional idler rolls for providing a constant wrap angle and thereby resulting in a reduction of equipment size and thereby a smaller footprint for machinery and equipment.



Changing entry and exit wrap angles however, with constant enlacement angle.



Web tension measurement at driven rolls

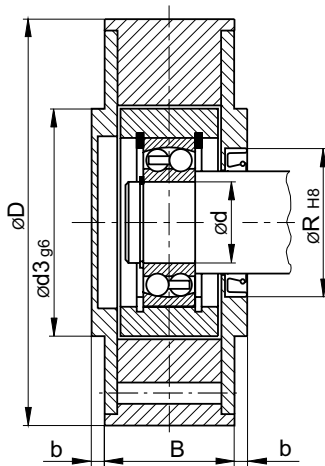


Ordering Example

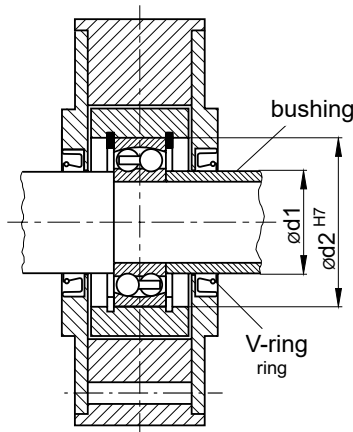
XYR1-15R-A500-S

Type	
Size	
Shaft- \varnothing	
Mes. Direction	
Design	
Nominal force	
Variants / Options	

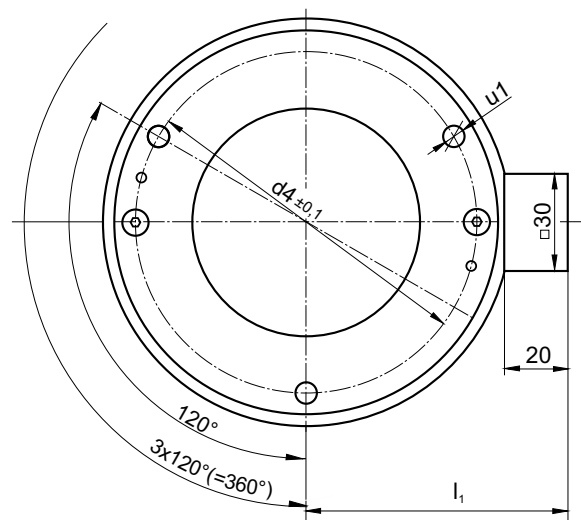
Technical Data	Values (%) based on nominal force
Nominal force (measuring range)	250. 500; 1000; 2000 N
Max. operating force	150 %
Absolute max. force	500 %
Nominal rating	1,5 mV / V
Combined error	1 %
Nominal ambient temperature	+ 10 ... +60° C (+50...+140° F)
Operational temperature range	- 10 ... +70° C (+14... +158° F)
Nominal resistance of the strain gauge bridge	700 Ω
Bridge supply voltage	10 VDC
Enclosure protection	IP 50



Design A
Open cover disk on one side

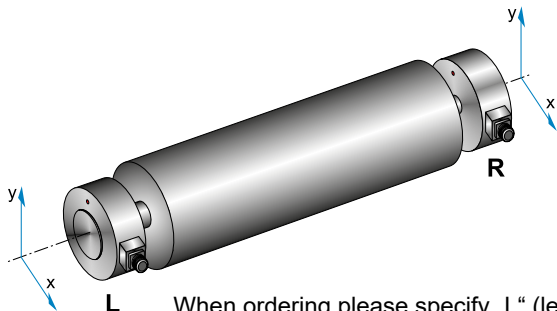


Design B
Open cover disk on both sides



Dimensions in mm (1 mm = 0.03937 inches)

Size	d	d1	d2	d3	d4	D	b	B	u1	R	l1	recomm. bearing
1	15	20	35	70	105	125	4	40	6,6	26	81	1202
	17	22	40							28		1203



L When ordering please specify „L“ (left) or „R“ (right) in order to determine unequivocally the measurement direction.

Bridge circuit

