

## Compression Force Sensor DK3

### Scope of Supply

Force sensor with 5 m cable (PVC) and load button (DK3) and cable connection T: cable gland, straight

### Variant

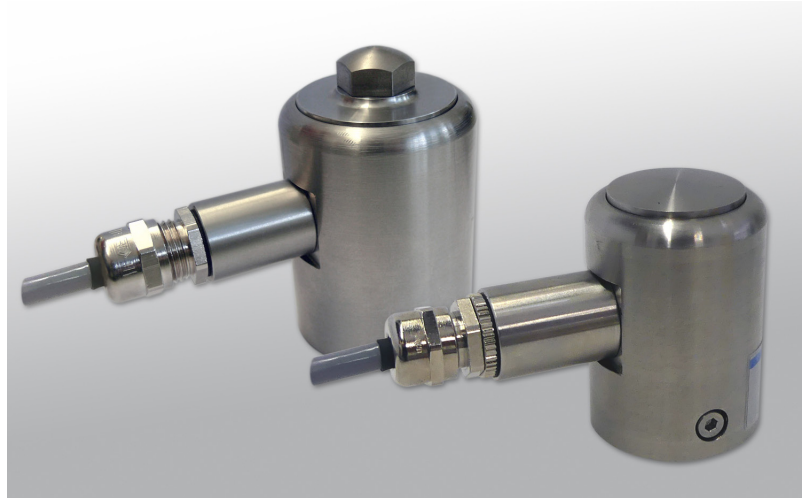
N2: plug connection, straight, M12, moulded

### Additional Option

F: For use in explosive areas, incl. J-Box

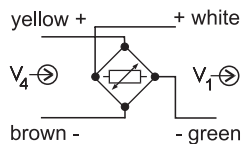
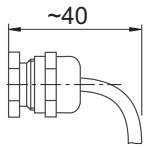
### Additional Accessories for DK3B

Pressure piece

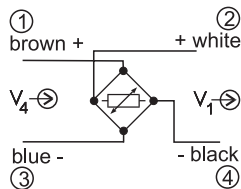
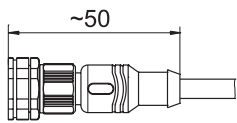


### Connection

Variant T



Variant N2



$V_4$  Supply voltage  
 $V_1$  Signal voltage

### Special Features

- Minimum space requirement due to compact design
- Simple mounting
- Nominal force ratings from 1 up to 50 kN
- Made of stainless steel

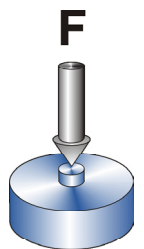
The cylindrical form and small dimensions of the compression force load cell series DK3 make them especially suitable for confined spaces. The completely enclosed stainless-steel design with the protection class IP 67 is able to withstand wet conditions in machinery and equipment. The screw top ensures an optimal force path.

The sensor consists primarily of a single sensor element designed and optimized with finite element analysis. As a result all sensors have the same dimensions. The load cells with nominal force ratings of 1 and 2 kN function according to the shearing principle, the other according to the compression principle.

Strain gauges applied to the active areas of the sensor body capture the acting forces.

A measuring amplifier e. g. the HAEHNE MV125 is available for the voltage supply to the full bridge and the processing of the measuring signals.

The signals at the output terminals of the amplifier are proportional to the acting compression force. They can be digitally displayed or used as instantaneous values in a control loop. The radial cable entry facilitates simple mounting of the load cell to machine frames.



### Ordering example:

